

BALTOSCOPE MOBI-X



Receptor type:	Amorphous silicon
Conversion:	CsI or Gadox
Active area:	From 298 x 248 mm
Pixel pitch:	100 µm
Communication:	WiFi or GbE
Spatial resolution:	5,0 lp/mm
AD/conversion:	16 bits
Image frequency:	From 6 fps @ 200 µm
Energy:	Up to 160 kV
Power supply:	Rechargeable battery
On board memory:	1 GB DDR3
Weight:	From 1,8kg

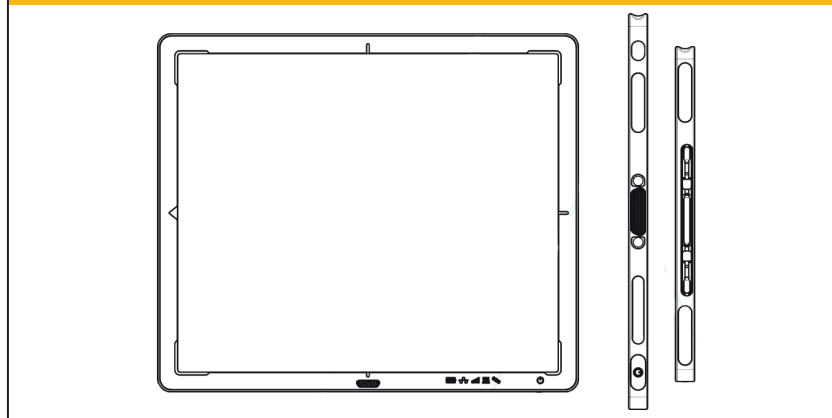
CHARACTERISTICS

- Delivered with Balteau NDT Acquisition software for image acquisition
- Pelican case available for transport
- Rechargeable battery
- Available in CsI or Gadox conversion depending on the model
- Aluminium frame with Carbon-fiber window
- Shielding up to 160 kV
- IPS012 Image Processing Software available as an option

KEY ADVANTAGES

- 3 versions/dimensions available of Mob-X
- From 25 x 30 cm to 43 x 43 cm images
- High resolution 100 µm pixel pitch
- Automatic Exposure Detection
- Wi-Fi & Gigabit Ethernet (GbE) interface
- Docking connector or GbE, power & sync
- On-board pixel corrections & storage
- Dynamic mode
- Fast preview image
- Robust & lightweight design

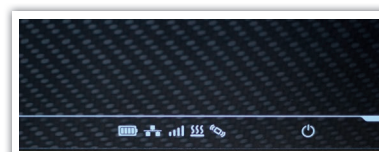
MECHANICAL DRAWING



The Mobi-X is a portable flat panel detector. Thanks to its battery and Wi-Fi interface, a digital inspection can now be done anywhere. Moreover the Mobi-X is very light, robust and ergonomic which makes it easy to be used in harsh environment and conditions. Equipped with an internal memory, the Mobi-X can store images in order to allow the operator to unload them later.



The Mobi-X is an X-ray detector with a 16-bit conversion for 100 µm² available in 3 different sizes. The acquisition software of the Inspection Suite comes with the equipment providing a user-friendly interface for the acquisition of images. The optional Image Processing Software (IPS012) makes it a complete solution.



Flat panels are a combination of electronics and silicon, providing direct conversion support to display radiographic images instead of using the traditional film technique. This helps to reduce the exposure time but also gives an extended range of thicknesses using the same energy range.

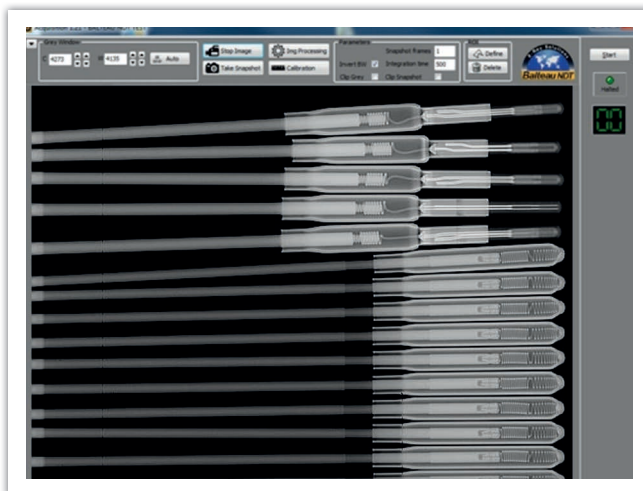


Specifications	Units	MOBI-X 16-100	MOBI-X 23-100	MOBI-X 25-100
Dimensions:	mm	282 (L) x 332 (l) x 15,5 (h)	384 (L) x 460 (l) x 15 (h)	460 (L) x 460 (l) x 15 (h)
Weight:	kg	1,8	3,8	4,1
Housing:		Al frame/Carbon fiber window	Carbon fiber front & back	Al frame/Carbon fiber window
Receptor type:		Amorphous silicon	Amorphous silicon	Amorphous silicon
Conversion screen:		CsI	CsI	CsI or Gadox
Pixel matrix:		3004 x 2508	3288 x 3524	4318 x 4320
A/D Conversion:	bits	16	16	16
Active area:	mm	298 x 248	350 x 426	432 x 432
Pixel pitch:	µm	100	100	100
Image frequency:	fps	10 fps at 200µm resolution	8 fps at 200µm resolution	6 fps at 200µm resolution
Interface:		WiFi or GbE	WiFi or GbE	WiFi or GbE
WiFi:		802.11n WiFi Std @ 5 GHz	802.11n WiFi Std @ 5 GHz	802.11n WiFi Std @ 5 GHz
Image transfer time:		WiFi: 2000ms / GbE: 300ms	WiFi: 3000ms / GbE: 500ms	WiFi: 3600ms / GbE: 600ms
On board memory:	°C	1GB DDR3, 8GB SDHC Card	1GB DDR3, 8GB SDHC Card	1GB DDR3, 8GB SDHC Card
Power supply:		Rechargeable battery 11,1V*	Rechargeable battery 11,1V*	Rechargeable battery 11,1V*

*(Delivered with charger 110 - 240 V)

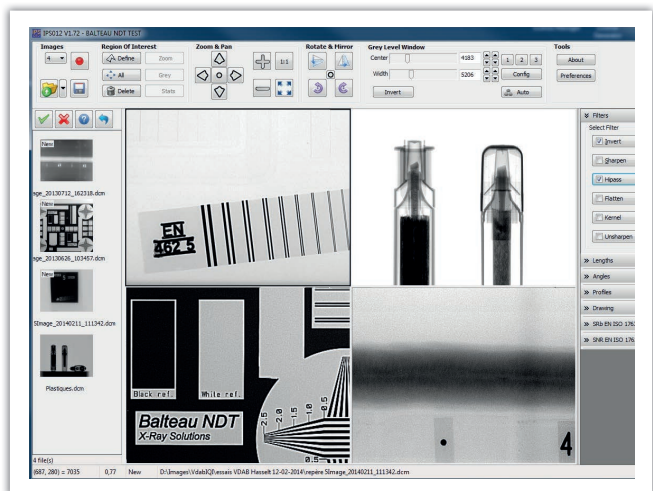
*(Delivered with charger 110 - 240 V)

*(Delivered with charger 110 - 240 V)



ACQUISITION SOFTWARE

- Included with the panel standard package
- Grey level window
- ROI (region of interest)



IPS012 (Image Processing Software)

- Sold separately
- Linked to Acquisition for an easy image transfer
- A lot of features

Contact details

Balteau NDT

Rue Voie de Liège, 12
B-4681 Hermalle Sous Argenteau
Belgium

www.balteau.com
balteau@balteau.com
Tel. +32 (0) 4 374 75 75
Fax +32 (0) 4 374 75 85

Distributed by: